



Donate

Subscribe

Volunteer

Website

April 1, 2020

"Even in darkness it is possible to create light and encourage compassion...Friendship exists and can become an anchor." -
-Elie Wiesel

From the Executive Director

Dear Friends,

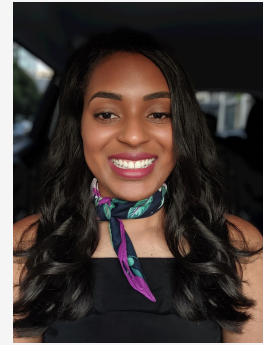
First, I hope you and your family are well, and if you are challenged by any health conditions, I hope you are able to access medical care and other assistance. I participate in a daily call with Jewish community agency directors and synagogue leaders, as well as the Mayor of Birmingham's faith leaders weekly calls, and I am heartened by our collaborative efforts in this unprecedented time. I hope you won't hesitate to contact me via email: Melissa.Patrick@bhecinfo.org or telephone: 205-795-4177, if you have questions or need further information. Please note that our staff is presently working from home until at least April 30th, but we are available by email, through our website, or by office telephone (please leave a message).

These are very trying times, yet we have an abundance of BHEC good news to share with you about our community impact last year. On behalf of our Staff and Board of Directors, we hope that as you read our e-Legacy updates, you will receive joy in the midst of our swiftly changing and difficult times with the COVID-19 pandemic.

Second, the BHEC is quickly revising our programs and curriculum, including daily messages on social media with links to our *Darkness into Life* and other online programming. In addition, Ann Mollengarden, VP of Education is developing a new curriculum that offers an online deeper dive into our Holocaust survivors' stories, as well as a new teacher

training curriculum we will pilot this fall.

Third, I hope you will join me in welcoming our new Communications, Events, and Program Coordinator, Joni Wiley, to our BHEC staff! Joni's credentials, work and leadership experiences are a perfect match for us. She is highly recommended by all who know her, including several Board members, and we are excited to have her join us mid-April.



Fourth, the BHEC was just planning to launch our annual *L'Chaim* fundraising campaign when the pandemic began unfolding here in our community. Like all non-profits, we depend heavily upon our annual campaign, which in our case supports 80% of our budget. Additionally, for the first time in our 18-year history, we incur overhead expenses for our temporary rental in three area locations - Temple Emanu-El, Levite Jewish Community Center, and Metro Storage facility. For now, however, we are pressing the pause button for 30 days and will be back in touch with you as soon as decisions are made.

Thank you for being a significant part of the BHEC's work of sharing stories of survival, remembrance, and hope. We are all in this together, and we must work hard to help one another across greater Birmingham and the State of Alabama do what is necessary to protect and care for everyone.

With hope and strength,
Melissa Self Patrick

Archives & Library Update

The BHEC Archives have found a temporary home at the Levite Jewish Community Center. We are fortunate to have found space that meets our environmental standards to preserve the priceless artifacts, documents, and photos in the collection.

Moreover, the archives are able to operate as usual, with continued processing and cataloging of materials, as well as remaining open for researchers by appointment, and continuing to accept donations.

BHEC is grateful to the LJCC board

and staff for the accommodations and enduring support.

In spring of 2019, BHEC was awarded a grant for digitization efforts by the Daniel Foundation. The funds are being used for the digital transfer of survivor testimonies in our collection, to purchase new and upgraded equipment, and subscriptions to multiple high-quality online resources.

The grant also funds additional archives staff for the duration of the project. I am pleased to welcome Margaret Schultz to our team. Margaret is a graduate of Samford University and is pursuing an M.A. in History with a certificate in museum studies at the University of Alabama. Margaret was an archives intern at BHEC during the summer of 2019 and brings both experience and fresh perspective to the organization. We are so happy to have her time and talents in the archives.

The BHEC Holocaust Studies Library contains over 3,000 items devoted to the history and literature of the Holocaust, World War II, and other relevant subjects. During this time of transition and growth for BHEC, there is only a small selection of volumes available at Temple Emanu-El for your reference and available to check out, while the majority of the library will be temporarily stored. Specific titles may be accessed with advanced notice. Additionally, our website has links to numerous high-quality resources. We also encourage you to utilize the collections and services of the Jefferson County Library Cooperative for your information needs.

Thank you for your patience and your support of these valuable resources. Please contact Rachel Jones Lopez, librarian and archivist, at archives@bhecinfo.org with requests, questions, or comments. We welcome input on the future of the archives and library to better meet the needs of our patrons.

Teaching with the Stories of Alabama Survivors

This past school year, the BHEC conducted teacher workshops in Florence, Gadsden, and Phenix City. Titled "Teaching with Stories," this newly created format used the personal stories of the

DISCOVER
THE BHEC ARCHIVES &
HOLOCAUST STUDIES LIBRARY'S
**NEW DIGITAL
RESOURCES**

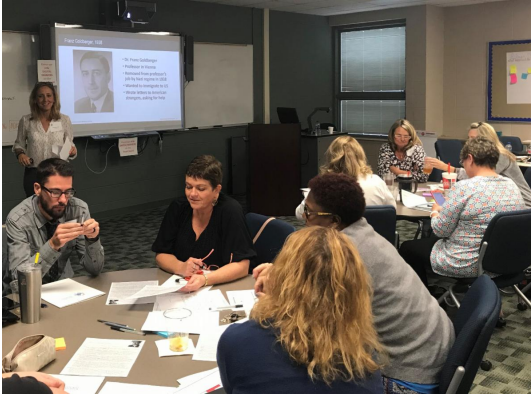
ANCESTRY WORLD EXPLORER
Access to all records on Ancestry, including over 2 billion international records.

FOLD 3
Access to over 550 million American military records, as well as other nonmilitary records, including many from the Holocaust.

NEWSPAPERS.COM
Access to over 15,000 newspapers, dating back to the 1700s.

HOLOCAUST AND GENOCIDE STUDIES
The major journal for scholarship on the Holocaust and other genocides, featuring research articles, interpretive essays, and book reviews.

**CONTACT ARCHIVES@BHECINFO.ORG FOR
MORE INFORMATION ON ACCESSING
THESE RESOURCES**



Holocaust to teach the history, rather than teaching the history and supplementing with the personal stories. In this highly successful series, we featured the stories of Ruth Scheuer Siegler, Robert May, and Anne Frank. All grew up within 100 miles of each other, all tried to emigrate, yet all experienced different outcomes.

As we continue to teach the history of the Holocaust through the personal stories of Alabama survivors, we will be developing a second "Teaching with Stories" workshop for next fall that will compare and contrast the stories of Max Steinmetz, Martin Aaron, and Elie Wiesel.

The Birmingham Holocaust Education Center relies on the generous support of donors to do the important work of teaching and preserving the lessons of the Holocaust. It is our hope that through this work, future generations will understand the danger of remaining silent in the face of hatred and bigotry. Click on the DONATE button below to help us in our mission.

Donate

Subscribe

Volunteer

Website

PHYSICAL ADDRESS

2100 Highland Ave. South
(inside Temple Emanu-El)
Birmingham, AL 35205-4004

MAILING ADDRESS

P.O. Box 130805
Birmingham, AL 35213-0805

If you have moved or recently changed your email address please let us know at office@bhecinfo.org or 205-795-4176

